

# Improving Awareness of Internal Theft



**Brian Broadus**

Principle, Asset Protection



**Jade Cook**

Regional Loss Prevention Manager



# The ever-changing retail landscape

High-tech  
stores



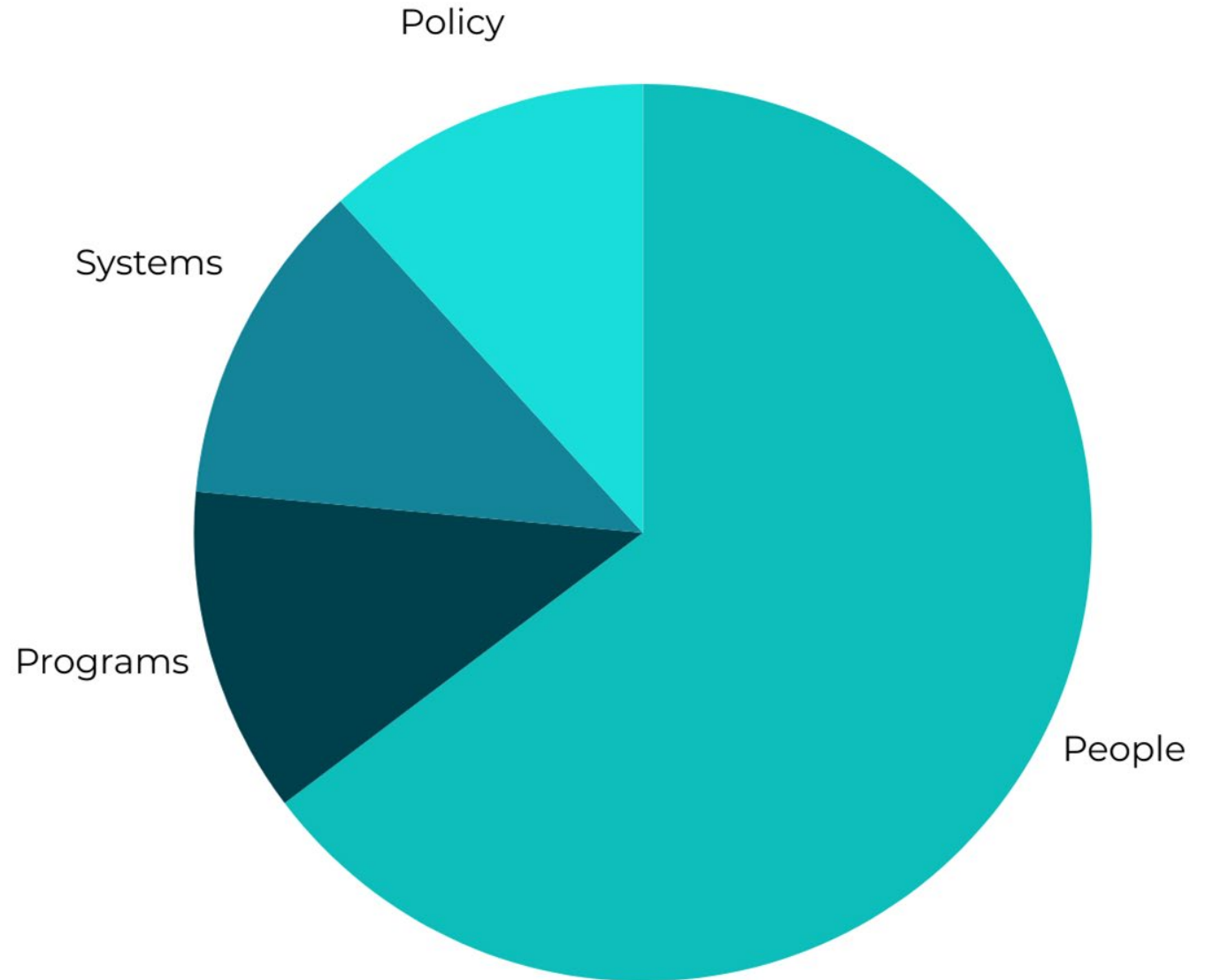
Faster delivery

Online-first  
products

A woman with curly hair, wearing a blue blazer, is showing a pink sweater to a customer with long dark hair wearing a yellow sweater. They are in a clothing store with racks of clothes in the background. The scene is overlaid with a semi-transparent blue filter.

**Do customers still shop with an associate?**

# The old loss prevention methodology



# Management's Asset Protection Role

## The three main functions



**Training**  
Proactive



**Auditing**  
Proactive



**Investigating**  
Proactive &  
Reactive

# A 2023 Shrink & Loss Initiative Story

- Maximize the use of existing CCTV systems with a technology that is patterned after POS EBR video recorded transactions.
- Multi-purpose uses and financial benefits of dashboarding exceptions for video reporting, monitoring, verification along with real-time notifications for 24/7 perimeter/interior door activity, POS alerts, and inventory movement.



# Solution research



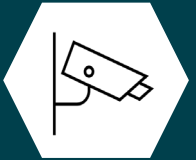
## CCTV to Alarms

5:1 Ratio



## Protect the box (Shrink Control)

Day and Night-time Coverage 24/7 'access' control/EBR door monitoring



## Cameras / Video

They never sleep



## Creative Thinking

Always more creative when budgets are tight



## New NVR?

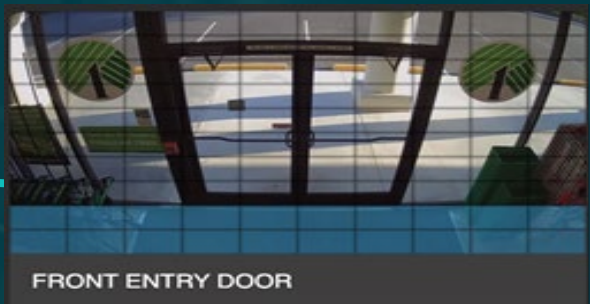
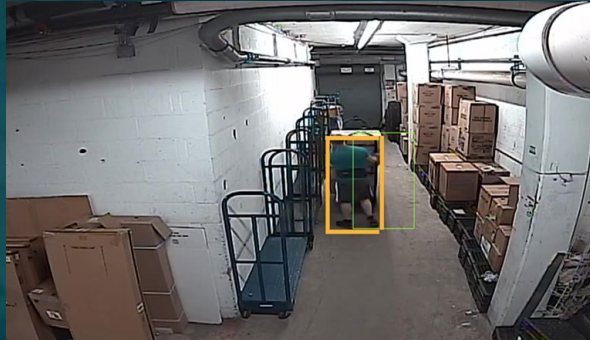
That could do alarms & alerts



## Solution Providers

What else can you do for us?

# CCTV Framework





# How to ingest schedules for monitoring

The screenshot shows a scheduling interface with a grid of days (Sunday to Saturday) and time slots (12 AM to 11 PM). The grid contains various schedule blocks: blue 'Alarm' blocks (e.g., 12:00 AM - 8:00 AM), green 'Trash' blocks, and a yellow 'Night Stoc... Doors:' block. A modal form is overlaid in the center, containing the following fields:

- Day:  (Required)
- Doors allowed to be opened:  (Required)
- Reason:  (Required)
- Start: 06 : 00 AM
- End: 11 : 59 PM
- Start Grace Period: 15
- End Grace Period: 15

Buttons at the bottom of the modal are 'Add' and 'Cancel'. A 'Clear all' button is located at the bottom right of the main interface.

# SRA Alerts

Sales Reducing Activities  
(SRAs)

Day and Night-time  
Alarm Exception



## Alert: SRA Nighttime Alarm Exception

Motion @ Dollar Tree #726 [SC3] -Z6-R15-D301

Name:

Dollar Tree #726 [SC3] -Z6-R15-D301

Address:

9491 East Washington St., Indianapolis,  
IN 46229-3085

[GOOGLE MAPS](#)

Start:

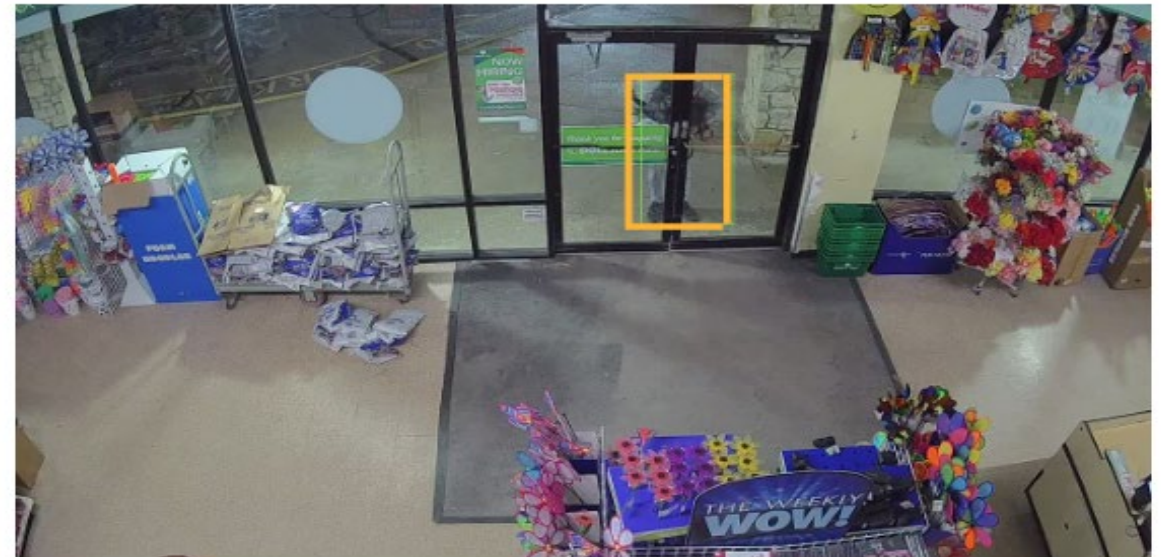
Fri, Mar 10, 2023 4:48 AM

Duration:

00:02:51

Camera:

FRONT ENTRY DOOR



# SRT Alerts

Sales Reducing Transactions (SRTs)

POS exception on handheld device or register



14 - Cash #2

★

▶

PLAY ALL (2)

**\$59.97 Return** ⋮

\$ 06:51:12 PM CDT - 17 Mar 25 - Nanaimo  
04:51:12 PM PDT - 17 Mar

Receipt: 429873 17/3/2024 16:51:12 PM  
Store: 25 Register: 5  
Server: Terri (8641007)

1 Return: MATTHEW	-19.99	-19.99
Jacquard Blackout Curtain 140x160cm, Silver, Polyester (504-13-1024)		

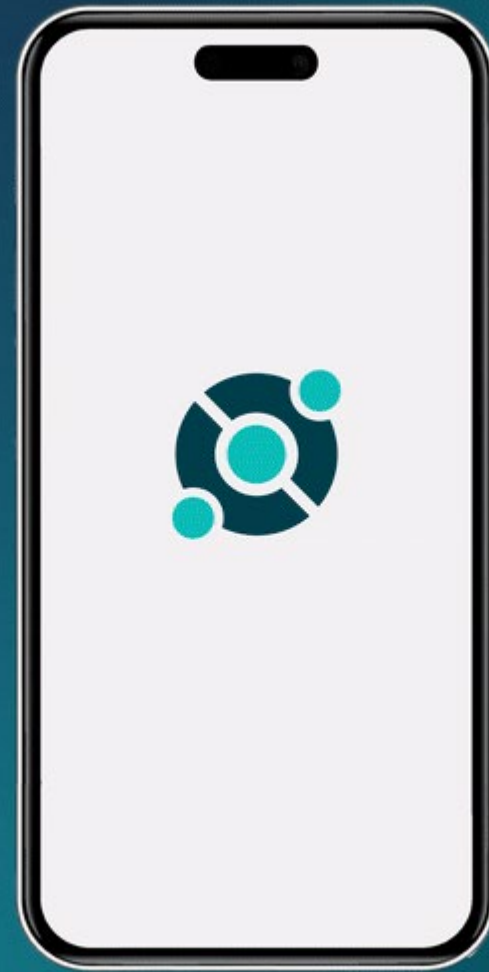
Enable scroll

ADD NOTES... SAVE CLIP

# Alerts from AI

Artificial intelligence to  
aide with finding and  
mitigating risk

Store wide, across  
multiple locations at once



# Compliance metrics dashboard

## Sales Reducing Activities

- Alarm Reports
- Safety Initiatives
- Sales Reducing Transactions
- Alarm Schedules
- Device Health
- Usage Reports
- Application Access

Store Type: All Zone: Zone Region: Region District: District



Stores	Alarm Contacts Not Configured#	Night Time Schedule Not Configured#	Failed to Arm	Failed to Arm Compliance %	Late Close#	Late Close Compliance %	Early Open#	Early Open Compliance %	Police Dispatches#	Stores in Compliance	Stores in Compliance %
64	0	0	0	100 %	9	86 %	22	66 %	0	40	63 %

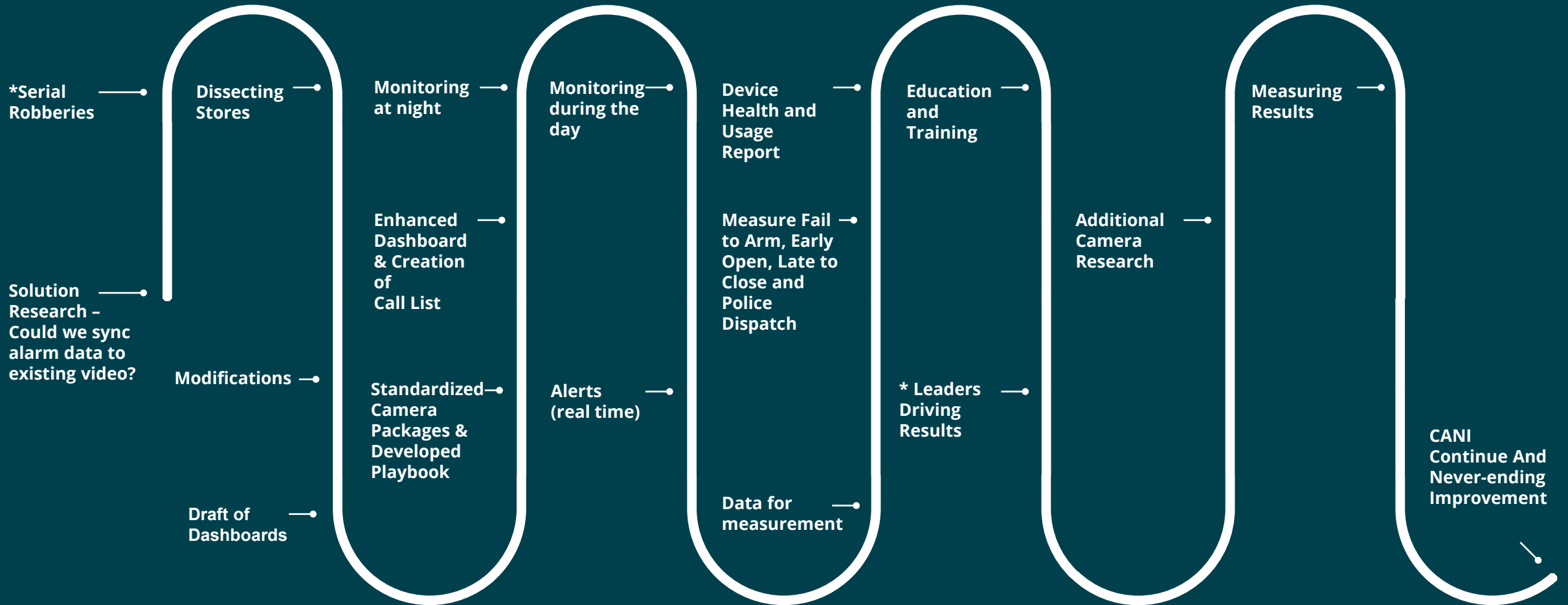
Stores	Exception Notification Contacts Not Configured #	Day Time Schedule Not Configured #	Day Time Exceptions Not Configured #	Day Time Exceptions Not Configured Compliance %	Stores with Day Time Exceptions #	Day Time Exceptions Compliance %	Stores in Compliance #	Stores in Compliance %
64	23	0	23	64 %	52	19 %	12	19 %

# Winning on this shrink & loss initiative

- Shrink and cash loss reduction
- Realtime POS signature
- Video verification
- Improved compliance metrics for day & nighttime physical security
- Increased awareness and perception of control for associates
- 24/7 Alarms with real-time alerts/intervention
- Soft savings on time/efficiency
- No keypad or passcode management
- Robust health monitoring – device and cameras
- Mini SOC
- Reduction police dispatches, false alarm & fines



# Typical shrink initiative journey



# Improving Awareness of Internal Theft



**Brian Broadus**

Principle, Asset Protection



**Jade Cook**

Regional Loss Prevention Manager







# | Questions?

[info@solink.com](mailto:info@solink.com)

+1 844-635-7305

[www.solink.com](http://www.solink.com)

390 March Rd Suite 110, Kanata, ON, Canada K2K 0G7