



Beyond Backup

Comprehensive Data Resilience against modern threats in the retail industry



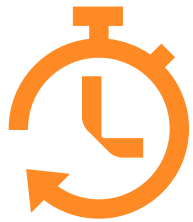
CITYVIA

WELKOM BIJ DE WINKELWAGEN

WELKOM BIJ DE WINKELWAGEN



The perfect storm of complexity and threats in retail:



Downtime

49%

of retailers do not a business continuity plan



Infrastructure Complexity

70%

of retailers struggle with multi-cloud complexity



Ransomware Attacks

85%

of organizations have been hot by ransomware



Data Loss

1 in 4

27% of organizations paid the ransom and never got their data back

Complexity

Threats



Beyond Backup

Comprehensive Data Resilience against modern threats in the retail industry



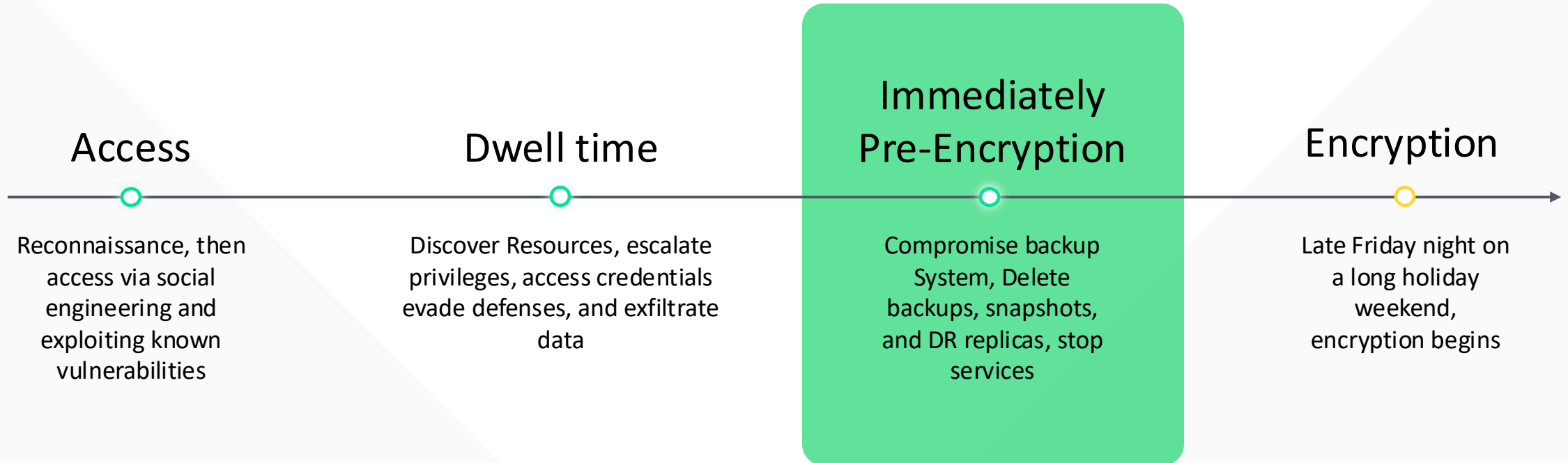
Chris M^cDonald

Principal Systems Engineer



Simplified Cyber Kill Chain

Ransomware accounts for around 20 percent of all cyber crimes



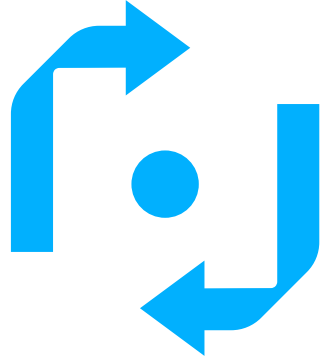
Resilience Throughout Your Data's Lifecycle



Before

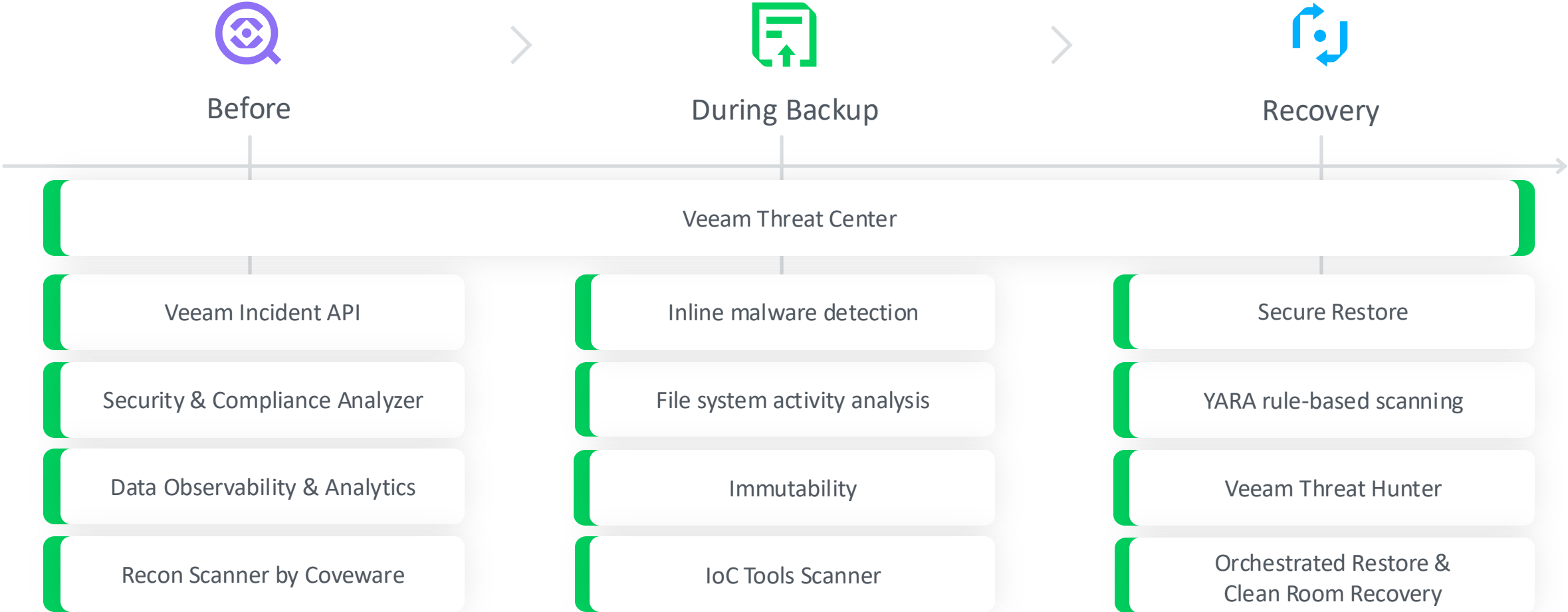


During Backup



Recovery

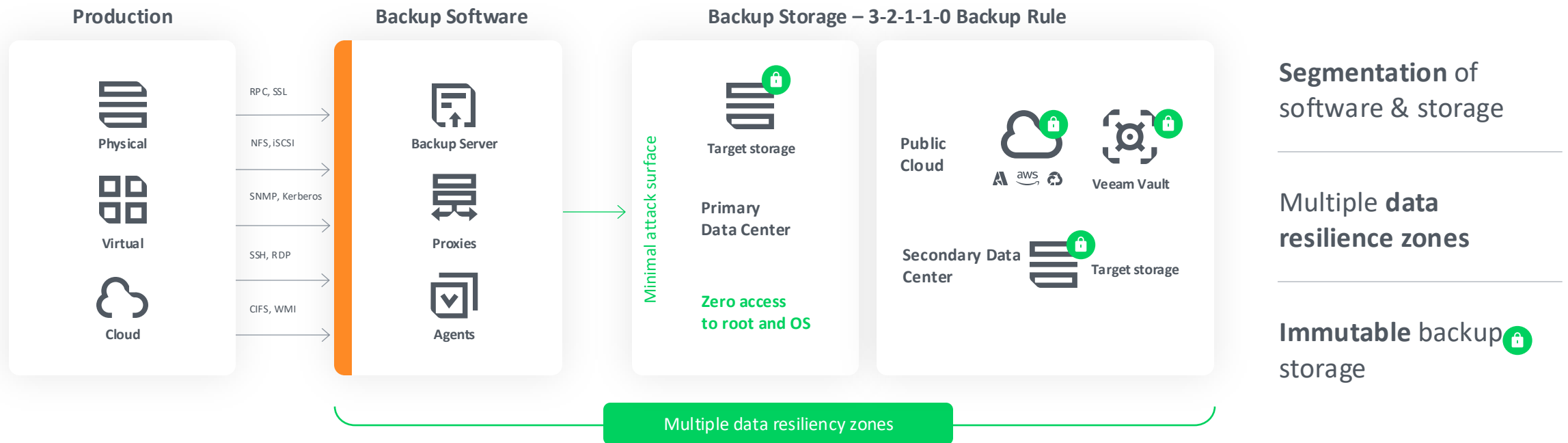
Resilience Throughout Your Data's Lifecycle



Data Loss and Ransomware

Hardware-agnostic security with Zero Trust Data Resilience (ZTDR)

Secure by design with Zero Trust Architecture



Made more powerful by a robust Security partner ecosystem

Malware Detection & Secure Restore



Key Management Systems



Security Incident and Event Management



Security Orchestration, Automation & Response



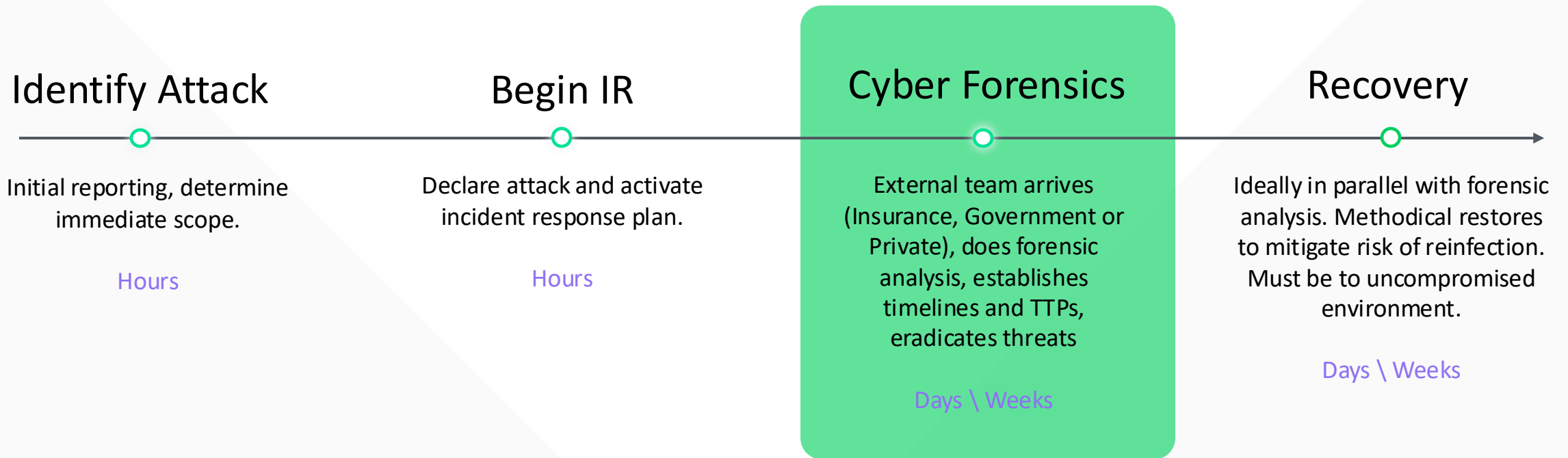
Others



Downtime and Business Continuity

Ransomware Recovery Process

Forensic Analysis and Recovery are the most time consuming



Fastest Recovery Options

Instant Recovery



- Virtual and Physical Machines
- Databases
- NAS / Unstructured Data
- VM Disks

VM / CDP Replication



Restore to the cloud



- Microsoft Azure
- Amazon Web Services
- Google Cloud Platform

Storage Integration



Storage Replicas



Storage Snapshots

Recovery Orchestration



1 - Click Recovery
at scale



Automated Testing /
Clean Recovery



Dynamic
Documentation

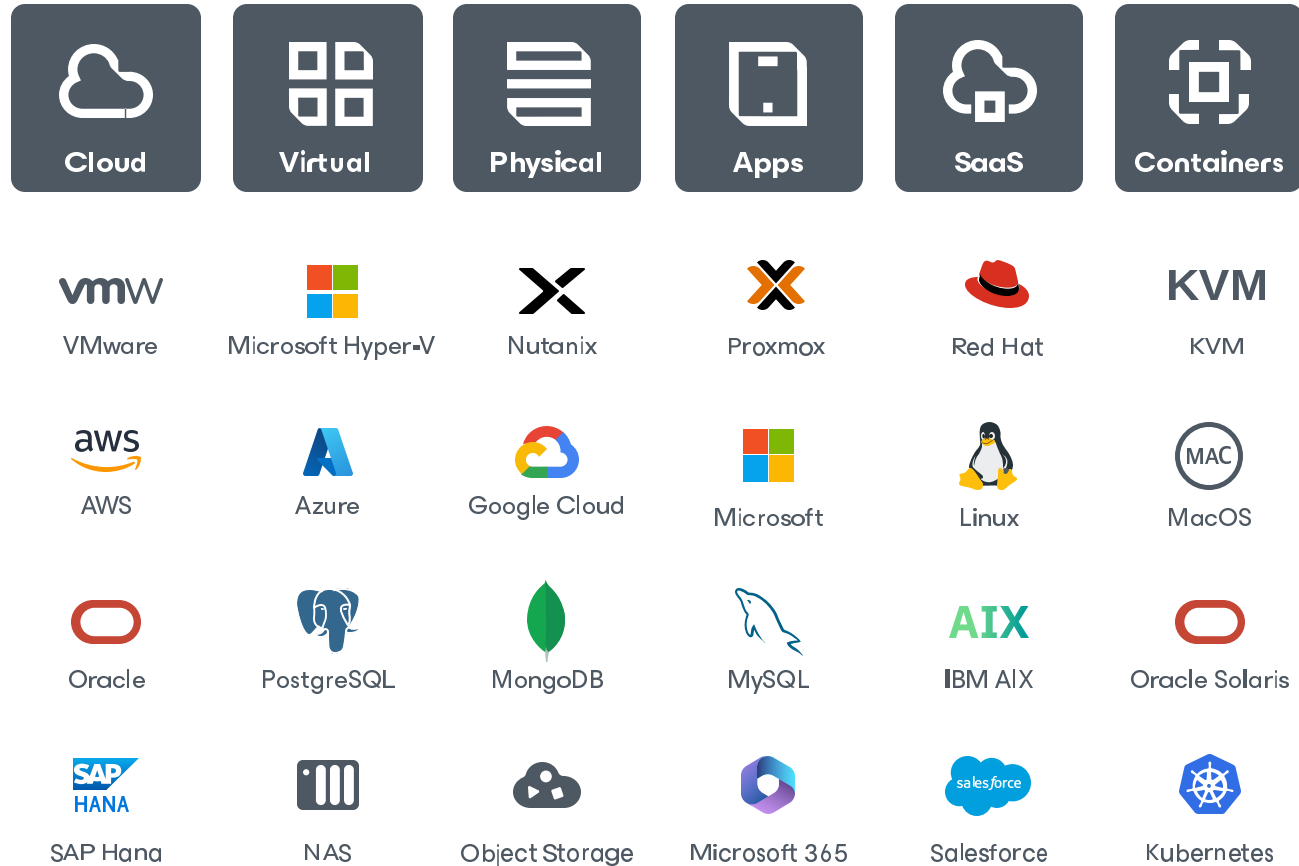


Compliance

Managing Hybrid and Multi-Cloud Environments

Extensive Workload Coverage Unmatched in the Industry

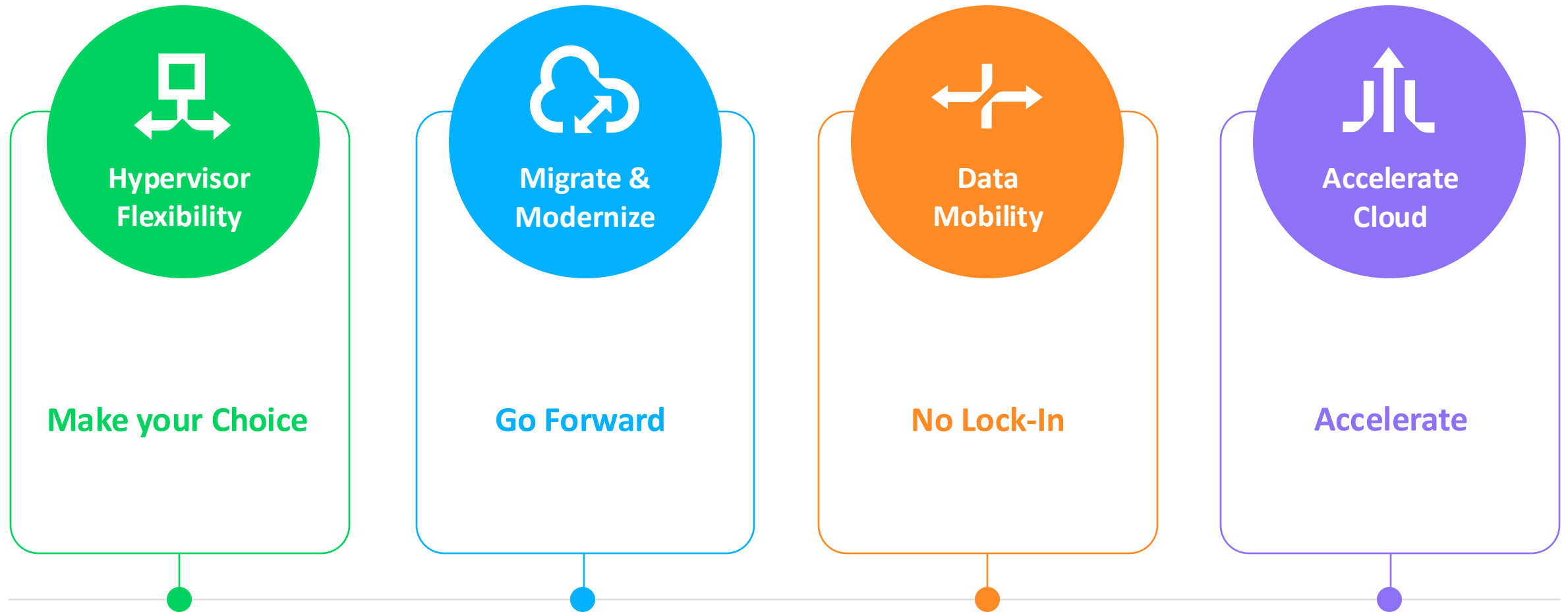
Broad Ecosystem Support



- Agentless (Virtual)
- Agent based (Physical)
- Application consistency
- Transaction log grooming
- Enterprise Plugins
- Unstructured Data
- IaaS / PaaS / SaaS

Navigating the Journey: Choosing the Right Path

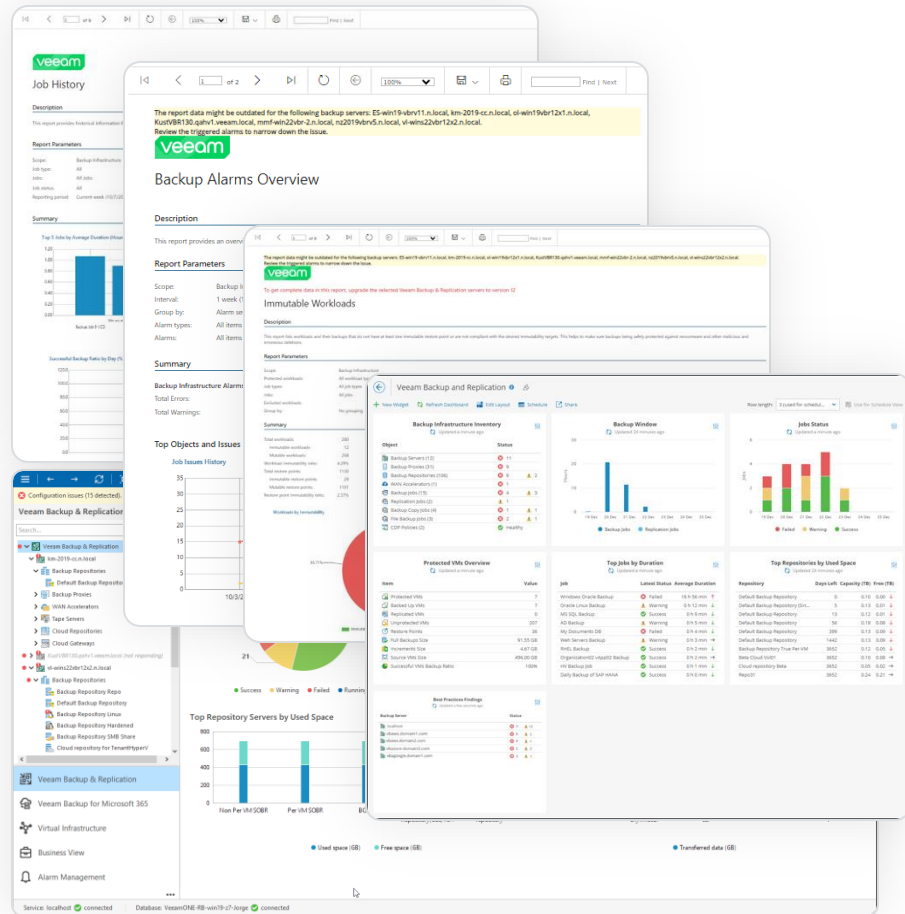
Like the different commuting options available with a GPS or a compass, Veeam provides four key areas to help businesses achieve data freedom:



Compliance and Data Retention

Proactive Intelligence at your fingertips

“I guarantee it will find something about your environment you didn't know.” – Rick Vanover



Empower Users

The screenshot shows the Veeam Intelligence interface. At the top, it says 'Veeam Intelligence' and 'Get real-time recommendations'. Below this, there are several sections:

- Description:** All metrics are back to normal
- Object Type:** VSphereVm
- Object Name:** VEEAM-PRX-LINUX-03

Connection to iSCSI storage target failure

- Status:** Error
- Description:** iSCSI discovery failure
- Object Type:** VSphereHost
- Object Name:** esxi-zlon-002.jorgedelacruz.es

These are just a few of the alarms currently in the system. Let me know if you need more details or specific alarms.

That is amazing! Can you please show them as a table?

Certainly, here is a list with some of the most recent triggered alarms:

Alarm Name	Object Name	Status	Description
Veeam malware detection activity state	veeam-vbr.n.local	Resolved	All metrics are back to normal
Backup job state	veeam-vbr.n.local	Error	Job "VMware - Snapshot-only of NetApp ONTAP" has ended with error NGINX-004 - Processing finished with errors at 3/19/2024 4:32:15 PM Failed to create storage snapshot for datastore ZEXT-NETAPP-002: Failed to connect to host 192.168.1.236
Unusual job duration	veeam-vbr.n.local	Warning	All metrics for Job "VMware - Backup of Infrastructure VMs" are back to normal.
Latest Snapshot size	MyCriticalDBServer	Error	VM snapshot (VM Snapshot 2/10/2023, 8:09:32 PM) size (20.3%) is above a defined threshold (20.0%). Current size is 28.35 GB.
Datastore write latency	ZIN-ESX02-NVMe-002	Error	All metrics are back to normal

Type something...



VDC Vault

Secure cloud storage
made easy



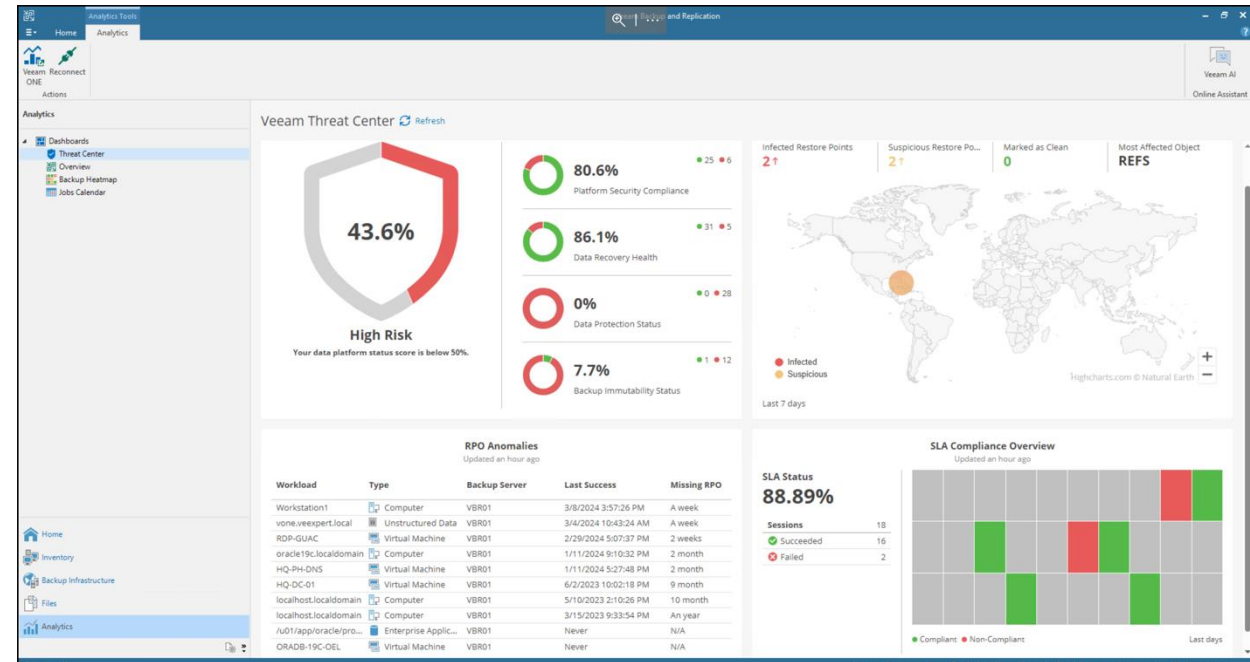
A fully-managed, secure cloud storage resource on Azure that eliminates the headaches of managing infrastructure and unpredictable cloud cost models.

Just let us know how much you need, and we handle the rest.

Veeam Backup Environment Security

Threat Center Dashboard in Veeam console

- Security and health score of your data protection environment
- Threats identified by Veeam Anomaly Detection or external threat detection technologies
- Data protection SLA and RPO anomalies



The Veeam logo is displayed in white lowercase letters within a white-outlined, rounded rectangular frame. The background features a green gradient with abstract, overlapping geometric shapes in various shades of green.

Follow us!



Join the community hub:

